



# SAFARI SPECIALISTS

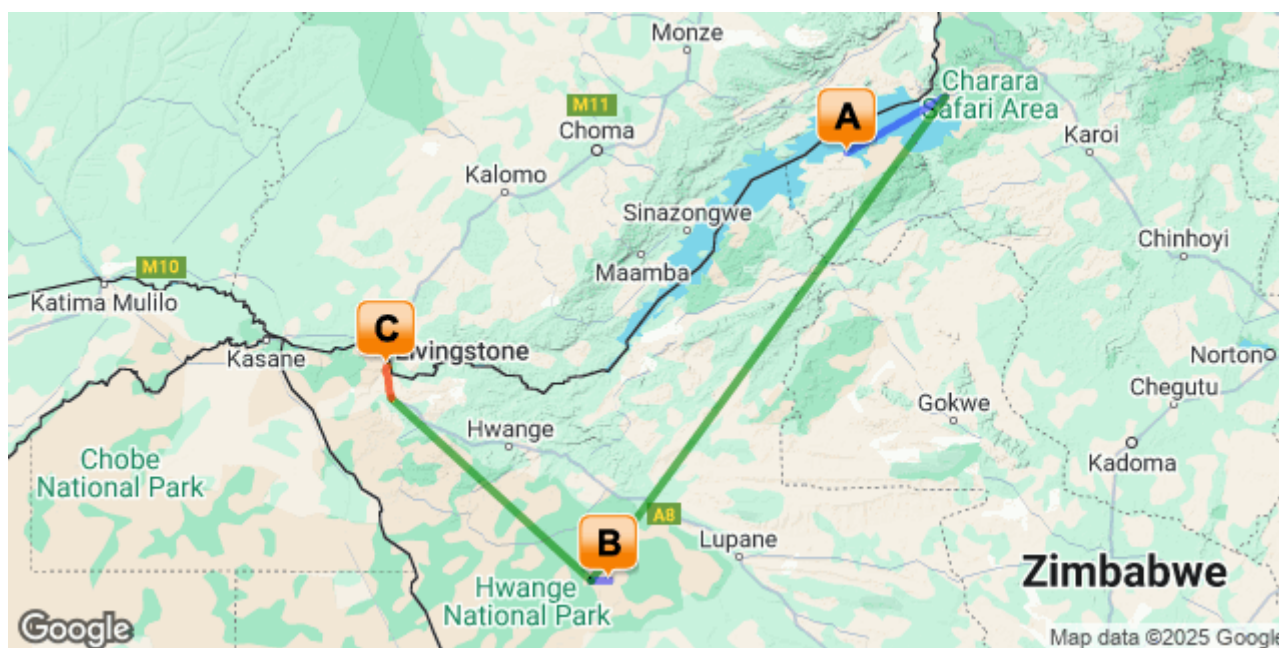


**BOTSWANA IS OUR HOME SAFARIS ARE OUR PASSION**



## 9nts Family Focus 2025

Bumi Hills - Hwange National Park - Victoria Falls (Zimbabwe)  
10 Days / 9 Nights



[Click here to view your Digital Itinerary](#)

### Introduction

Start	Accommodation	Destination	Basis	Duration
Day 1	Bumi Hills Safari Lodge	Bumi Hills	FI	<b>3 Nights</b>
Day 4	Somalisa Acacia	Hwange National Park	FI	<b>3 Nights</b>
Day 7	Batonka Guest Lodge	Victoria Falls (Zimbabwe)	B&B	<b>3 Nights</b>

### Key

B&B: Bed and Breakfast. FI: Fully Inclusive - Bed, All Meals, Fees and Activities

## Transport

### Flight Information

Date	Flight	Departure/Arrival Airport
Day 1	Shared Charter	Robert Gabriel Mugabe International Airport [HRE] - Kariba Airport [KAB]
Day 4	Shared Charter	Kariba Airport [KAB] - Manga Airstrip
Day 7	Shared Charter	Manga Airstrip - Victoria Falls International Airport [VFA]

### Transfers

Date	Company	Pick Up/ Drop Off
Day 4	Somalisa Acacia	Manga Airstrip - Somalisa Acacia
Day 7	Somalisa Acacia	Somalisa Acacia - Manga Airstrip
Day 7	Wild Horizons	Victoria Falls International Airport [VFA] - Batonka Guest Lodge
Day 10	Wild Horizons	Batonka Guest Lodge- Victoria Falls International Airport [VFA]

### Family Friendly, Price on Application

Due to varying family configurations, we have not given a rate, please contact your consultant for a specific quote.

There is no minimum age for this safari –  
Kindly note minimum age for any walking activity is 16 years.

### Special notes

- Please note that where a booking crosses over 2 different rate periods e.g. Oct & Nov, neither rate is applicable – please request a special quote
- The above rate is subject to change due to major currency fluctuations, fuel surcharges and increases in national park fees (see below)
- Single supplement\* is for accommodation only, applicable when travelling with more than 2 guests and excludes a flying surcharge for guests travelling solo – rate available on request
- Subject to availability at the time of booking

### Included



#### Travel for Impact – Responsible Travel

By booking this itinerary, you donate USD\$2 for every night of travel per person on the booking. Your donation goes to **Travel for Impact (TFI)** and ensures that your safari has a meaningful impact on the people who live locally. For more information on giving back to your chosen destination of travel, visit [www.travelforimpact.com](http://www.travelforimpact.com)



#### Okavango Air Rescue

Please note that we include a fee into all our packages for a local medivac in case of an emergency. Please discuss further details with your consultant and for more information, visit <http://www.okavangorescue.com/>



## Day 1-4

### African Bush Camps Bumi Hills Safari Lodge, Lake Kariba

---

#### Day Itinerary

On arrival at Harare Airport, you will be met by a representative from Safari Logistics who will assist you with check in for your light aircraft transfer to Bumi Hills. Here, you will stay in an Interleaving Lake View Family Room for three nights on a fully inclusive basis.



Lake Kariba is a vast manmade lake stretching for over 5000 square kilometres, and is 220 kilometres long and over 40 kilometres in width. It is one of the largest dams in the world. The dam was constructed on the Zambezi River along the border between Zimbabwe and Zambia and is owned by the two countries. By flooding Kariba Gorge and the Zambezi River between 1958 and 1963, Kariba Lake was born. One of the world's largest animal rescue attempts took place in the area, under the name "Operation Noah". The team rescued more than 6,000 animals and relocated them to Matusadona National Park and the surroundings of the lake. The lake generates hydroelectric power for both countries and has a very good commercial kapenta fishing industry. The sheer size of it makes it easy to forget it's a dam and in certain places it almost feels like an ocean. The name "Kariba" is derived for the Tonga word karive, meaning "trap". It is well named as the river has been trapped by the dam across the gorge.

Lake Kariba is a very popular destination for both locals and tourists. It offers spectacular views, walking safaris, game drives, fishing for the feisty tiger fish, as well as canoeing. This large man-made lake is bordered by some of the finest parks on the planet and offers a remarkable safari and wildlife experience. Around the lake, the healthy populations of hippo and crocodiles dot the waters and the sun-bleached trees that drowned all those years ago are still standing strong, breaking the surface to become birdlife magnets, especially for fish eagles, cormorants and other water birds. Sites to see within Kariba include the dam wall - a feat of engineering.

A particularly atmospheric and beautiful lake, Lake Kariba enchants with spectacular sunsets and dramatic vistas. Most of all, you will remember the smells of Africa. The dust of the day, the moisture of the lake and, most evocative of all, the smell of advancing rain.

---

#### Overnight: African Bush Camps Bumi Hills Safari Lodge

**Includes:** meals, local drinks, two scheduled activities per day, laundry and park fees, conservation & community levy

**Excludes:** premium drinks

**Activities:** game drives, safari walks, game and sunset boat cruises, fishing and village visits.

Sitting atop a hill commanding magnificent Lake Kariba vistas, Bumi Hills Safari Lodge is the ultimate "rest and relaxation" retreat located 55km south west of Kariba town. The lodge stretches out towards the lake where elephant and buffalo graze on the shoreline below with zebra, wildebeest, waterbuck and impala. In

Matusadona National Park nearby, one might spot black rhino, leopard or lion on the prowl.

Bumi Hills Safari Lodge offers 10 lakeview suites each offering a view of the lake and wildlife can be seen grazing on the shoreline. Facilities in the rooms include en-suite bathrooms, overhead fans, air-conditioning and a balcony or veranda. The two bedroomed Boabab Villa offers privacy to groups and families.

The main lodge areas include a lounge, dining room, a game room as well as a terrace bar overlooking the lake. Other facilities include an infinity swimming pool and a spa offering panoramic views of the lake.

The Lodge offers a variety of activities which include game viewing in open safari vehicles, on foot accompanied by a professional guide and by boat. The sunset cruise provides guests with wonderful photographic opportunities especially of the famous Kariba sunsets and the hide enables you to observe the animals at first hand and offers superb bird watching. Casual fishing is also available thus giving you the chance to challenge the lake's fierce fighting tiger fish. Cultural encounters can be arranged in neighbouring villages for an insight into the rich, ancient culture of the Tonga people. All spa treatments are at an additional cost.

**Airstrip Transfer Time:** 10 min



## Day 4-7

### African Bush Camps Somalisa Acacia, Hwange National Park



If you have dreamt of an Africa with expansive plains and wide horizons, where elephant and buffalo traipse in huge numbers towards waterholes and giraffe browse from flat topped acacias while a blazing sun sets behind them... you can find it in Hwange.

As Zimbabwe's largest national park, Hwange has a sizeable reputation that it wholeheartedly deserves.

The sight of hundreds, if not thousands of elephants and buffalos streaming towards you as you sit at a waterhole is indescribable. There is nothing like the sound of elephants' peaceful rumbling or the deep thundering of buffalo hooves on hard ground when they spook, wary of lions that may lie in wait.

This sight and sound of a waterhole in the midst of pristine wilderness visited by huge numbers of animals is typical of Hwange. Beyond the sights and sounds, the feeling of Hwange is what will remain with you: awe and peace from spending time in a true, preserved wilderness.

Hwange's diverse habitats mean that it offers large numbers of desert adapted, plains and woodland animals. The famed elephant population is one of the largest in the world and it has plentiful predator populations such as lion, leopard and cheetah. Hwange also boasts one of Africa's last strongholds of endangered African wild dogs.

Hwange offers the opportunity to see a variety of rare antelope such as eland, sable, roan and if you are lucky the desert-adapted oryx (gemsbok).

Apart from the variety of species and its beautiful setting, Hwange is unique in its ease of access. The park begins a mere hour from Victoria Falls and there is a range of accommodation across every price point. The North typically offers a mix of private lodging and National Park chalets, as well as a well-maintained road network. Hwange's more southern concessions are generally private, offering luxury lodges and camps.

## Day Itinerary

Following breakfast and a possible morning activity (flight time permitting) you will transfer by light aircraft to Hwange National Park where you spend three nights at Somalisa Acacia on a fully inclusive basis in a Family room.

## Overnight: African Bush Camps Somalisa Acacia

**Includes:** meals, local drinks, 2 game viewing activities per day, park fees and laundry

**Excludes:** premium drinks

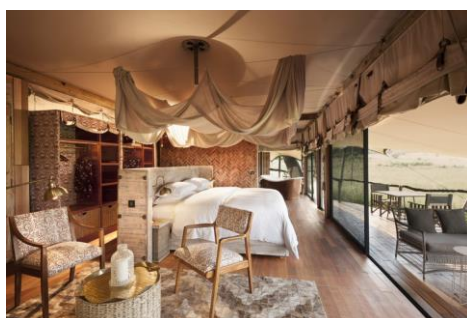
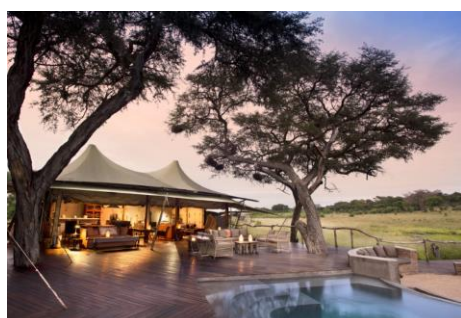
**Activities:** day and night game drives, walking, bird watching, game viewing from hides

Somalisa Acacia Camp is a charming small exclusive camp situated alongside the famous Somalisa Camp, known as the home of the elephants, in a private concession in the heart of Hwange National Park.

Meant for private safaris, the camp caters for small family groups and those requiring a private experience shared with a maximum of 8 people in simplistic tents that are on slightly raised decks, under the canopy of a grove of acacias on the western side of Somalisa. Each tent has en-suite bathroom facility including flush toilet and running bucket shower. The camp has its own dining and lounge area with a small splash pool enabling one to cool off and share with elephants during the heat of the day. The camp enjoys its own private views of a small water hole that is frequented by large herds of big game which include buffalo, kudu, zebra, giraffe, lion and many more.

Activities on offer are game drives and walking excursions, carried out by the camp's professional guides. Most of the activities are in the Somalisa private concession but with easy access to other parts of the park. A private guide and tour leader facility is available on special request.

**Transfer Time:** From Manga Airstrip by road is 30 minute game drive transfer to camp





---

## Day 7-10

### Batonka Guest Lodge, Victoria Falls (Zimbabwe)

---



At Victoria Falls, the earth splits open and swallows one of Africa's greatest rivers, the mighty Zambezi, creating the largest sheet of falling water on earth. As the water hits the narrow depths of the Batoka Gorge beneath, it blasts a cloud of mist skywards, lending the falls their local name 'mosi-oa-tunya' (the smoke that thunders). When the Zambezi is its fullest, the mist hangs a permanent raincloud above the falls, showering visitors on even the sunniest of days and visible for miles around.

Above the falls on the upper Zambezi, boats cruise the tranquil water at sunset while the distant spray catches the fading light downstream. Below the falls, the Batoka Gorge's rocky walls funnel the lower Zambezi into a chain of world-class rapids, prime for white water rafting.

Aside from being a UNESCO world heritage site and a natural world wonder, Victoria Falls also forms a natural border between Zimbabwe and Zambia. The falls can be seen from both countries, and for the most part the same activities are offered on both sides, from helicopter scenic flights to village visits and souvenir shopping.

Whether your idea of getting away from it all is a relaxed high tea in colonial grandeur or a heart-stopping bungee jump off a bridge, Victoria Falls keeps both the faint of heart and the most insatiable of adrenalin junkies busy for days.

From Zambia, a side on view of the falls is on offer with views into the Batoka Gorge, as well as the possibility of perching yourself at the edge of the falls on the vertigo-inducing Livingstone Island.

From Zimbabwe, you'll get a full-frontal view of three quarters of the falls' 1.7km wide curtain of water from viewpoints and footpaths meandering through a rainforest kept hot and humid by the spray of the falls.

---

### Day Itinerary

Following breakfast and a possible morning activity (flight time permitting) you will transfer by light aircraft to Victoria Falls Airport. On arrival at the airport, you will be met by a representative from Wild horizons who will assist you with your road transfer to Batonka Guest Lodge where you spend three nights on a bed and breakfast basis in a Family room.

### Overnight: Batonka Guest Lodge

**Includes:** bed & breakfast and 2/day Victoria Falls town shuttle

**Excludes:** drinks, additional meals, activities, additional transfers & laundry

Batonka Guest Lodge is situated in the quiet residential suburb of Victoria Falls, just 2.2 km from the Victoria Falls Rainforest entrance and 1km from the town centre. The Lodge is set in lush gardens, a tranquil haven away from the bustle of town but within easy walking distance of the main attractions.

Batonka Guest Lodge offers 27 en-suite air-conditioned rooms, complete with a balcony, overlooking the beautiful garden.

All rooms are set on ground level and comfortably furnished with a TV and coffee station. Each of block of rooms is carefully positioned around the property to give maximum privacy. All may be converted from twin to double. Certain rooms have interleading doors, being ideal for families. The Flame Lily Block boasts its own pool, bar, lounge and breakfast area.

The main area has the dining facilities, lounge areas, reception and curio shop. The dining facility can be either indoors or on a large spacious and outdoor terrace area overlooking the garden and swimming pool. The restaurants offer a full English breakfast and a choice of wholesome home style cooking for lunch and dinner. There is a comfortable lounge area inside with a fireplace, and an outdoor lounge area is also available for guests.

**Airport Transfer Time:** 20 minutes from Victoria Falls Airport



---

## Day 10

### End of Itinerary

---

#### Day Itinerary

Following breakfast and a possible morning activity, a Wild Horizons representative will assist you with your road transfer to Victoria Falls Airport in time for your exiting international flight.



## Travel Information

**Please take note of our Booking Terms & Conditions. It will be understood that these have been read and accepted by you on receipt of confirmation of the booking.**

- For your safety and peace of mind, on confirmation of your booking, we strongly recommend that Travel Insurance is arranged to cover cancellation, curtailment, emergency evacuation, medical and repatriation expenses, damage/theft/loss of personal luggage, money and goods.
- Road and air transfers and activities are quoted on a seat basis (shared) unless otherwise requested or specified. Passengers may have various stops en-route to a destination. The transfer or charter company reserves the right to specify departure and arrival times. Private charters and airport assistance from arrival to departure can be requested at an additional cost.
- Passengers exceeding 100kg are kindly asked to notify us at the time of booking as a surcharge may be applicable on internal flights due to smaller aircraft having strict weight limits in compliance with industry safety regulations.
- The costs are subject to change at any time due to fluctuations in fuel costs, taxes, levies, government regulations, rate of exchange and factors that are imposed upon us by our suppliers that are beyond our control.
- Please advise us of the ages of children (under 18) travelling, together with their date of birth, at the time of booking as not all lodges accept children and there may be restrictions or conditions which can affect pricing.
- We recommend that optional activities be booked in advance at time of confirmation to guarantee availability e.g Dinner cruises in Victoria Falls
- Please allow a minimum 2-3 hours connection time in Johannesburg for international flights. It is important that you check that your flight tickets have been issued in your full names as per your passport. Ensure that your luggage is checked through to your final destination to avoid the need to collect and recheck it during transit, such as at OR Tambo International Airport
- We require full payment for international and domestic scheduled flights at the time of confirmation e.g Airlink JNB/MUB, Proflight LIV/LUN within Zambia. We are not able to guarantee any flights before receipt of payment as seats are often held for a limited period before ticketing is required so this is a time sensitive issue. Air tickets are considered non refundable unless otherwise specified. Please confirm the details with your consultant at the time of booking.

### **Passports, Visas and Travel Documentation**

Your passport must have at least 6 months validity before the expiry date and 6 empty pages (not including the endorsement pages). The onus is upon the guests to ensure that passports and visas are valid for the countries visited. Please note that certain visas can take up to 3 months to be processed so please consider this when booking.

If you are travelling with children through Southern Africa, please be aware that you will be required to have certified copies of their unabridged birth certificates, and passports on hand. If you are not their legal parents, or if only one of you is travelling – you will need to have consent in the form of an affidavit giving you permission to travel with the child.

### **Inter-camp transfers**

Due to the remote locations of the areas in Southern Africa - your itinerary may include road, boat, helicopter and air transfers in small aircraft.

On shared air transfers, all the flight times between lodges are arranged a few days before the flights take place to avoid endless schedule changes. The lodge or camp where you are staying will be advised of your departure time the day before travel and will ensure that you are at the airstrip on time. Although every effort will be made to ensure that guests are transferred together in one vehicle / aircraft, this cannot be guaranteed, especially with larger groups. The aircraft used for inter-camp transfers vary in size from 3-, 5-, 7-

and 12-seater aircraft. We recommend that guests susceptible to motion sickness take appropriate precautions due to flying conditions.

### **Weight & Luggage Restrictions**

There are strict luggage restrictions in place on any itinerary, which includes light aircraft transfers for safety reasons. Luggage, including camera equipment and hand luggage, is restricted to 20 kg per person travelling on seat rates. Only soft bags will be accepted - no hard suitcases or bags with rigid frames can be transported, as they physically cannot fit into the aircraft.

The maximum dimensions of the soft bags that can be accommodated are as follows: 25cm/10 inches wide x 30cm/11 inches high and 62cm/24 inches long. Please keep in mind that the baggage compartments on the light aircraft are only 25cm high, so the pilots must have the ability to manipulate the bag into the compartment. Note that laundry can be done on a daily basis at most camps and lodges and they also offer amenities (shower gel/shampoo).

Should you arrive with excess baggage without prior warning, your baggage could be delayed, as we may have to fly the baggage into camp at a later stage at considerable extra cost to you. However, should you notify us in advance that your baggage will exceed the limit; we may be able to assist you with alternative arrangements e.g. storage or purchase of additional luggage allowance.

For bookings including flights within Zambia & Mozambique, please note luggage weight exceptions under destination information.

### **Lost Luggage**

Lost luggage on international flights is a common problem facing travellers today. We suggest that you pack a small bag with your essentials, including any life sustaining medication, which can be carried with you as hand luggage. If travelling as a couple or family we suggest that you split your clothing between bags so that if one bag gets lost, you will have basic items on hand to see you through the first couple of days while we try and recover your lost baggage.

Please note that whilst we try our utmost to locate and re-unite you with your bags, that there may be charges involved in getting your bags to remote areas, which would be for your cost. Please remember to report the lost luggage to the airline as soon as you make the discovery - the airline will issue you with a Baggage Claim Form, which you will need in order for us to trace the bag.

### **Health and Dietary**

Please note that you are travelling to a Malaria-risk area. Please consult your doctor for medical advice prior to travel.

Although usually safe to drink, we do not recommend that you drink the tap water. Filtered water is available at the camps and lodges.

The camps are remote, with limited power supply and access to resources, so it is very important to notify us in advance of any special dietary requirements, medical conditions and medical equipment you may need with you. Please carry critical medication in your hand luggage.

Yellow Fever Certificates - are only required if you have travelled to a Yellow Fever area as designated by the World Health Organisation. Please check with your Travel Clinic or doctor well in advance of your departure date.

### **General Travel Information**

- Safari Camps and lodges offer limited electricity usually generated by solar or generator in order to make provision for charging cameras and electronic devices.

- Please ensure that you do not pack any valuables, cameras, cash, laptops travel documents and medication in your checked in luggage – these should be kept on your person at all times.
- Please notify us immediately of any changes to flight arrival and departure details as this affects onward transfer arrangements.
- Please note that most camps & lodges in Botswana do not have double beds. Twin beds are pushed together to make up a double room.
- Although every effort is made to adhere to schedules the company reserves the right and in fact is obliged to occasionally change routes and camps on safaris as dictated by changing conditions or unforeseen circumstances.
- By confirmation of the booking, you acknowledge that you have been made aware and accept that the tour carries inherent risks, and that you voluntarily assume all risks which are associated with the tour. You will be required to sign indemnities at the various camps, lodges and service providers, and abide by their operators' code of conduct in order to ensure your safety.
- If you have any cause for complaint while travelling, you should immediately bring it to the attention of the camp manager and / or our Maun office that will attempt to resolve the situation immediately.
- Do not remove any animal artefacts, flora or fauna from any of the areas you visit, as there are strict international regulations on the export of such items.