



SAFARI SPECIALISTS



BOTSWANA IS OUR HOME SAFARIS ARE OUR PASSION

Sunway Safaris Botswana Wildside (Camping)

Serowe - Maun - Okavango Delta - Moremi Game Reserve - Savuti - Chobe National Park - Chobe River Front - Livingstone (Victoria Falls)
14 Days / 13 Nights



[Click here to view your Digital Itinerary](#)

Introduction

Start	Accommodation	Destination	Basis	Duration
Day 1	Khama Rhino Sanctuary Campsite	Serowe	L&D	1 Night
Day 2	Maun- Campsite	Maun	B, B&L	1 Night
Day 3	Okavango Delta Wild Camping	Okavango Delta	FB+	2 Nights
Day 5	Maun – Campsite (Audi Camp or similar)	Maun	B, B&L	1 Night
Day 6	Moremi area Wild Camping	Moremi Game Reserve	FB+	2 Nights
Day 8	Savuti area Wild Camping	Savuti - Chobe National Park	FB+	2 Nights
Day 10	Chobe River area Wild Camping	Chobe River Front	FB+	1 Night
Day 11	Kasane – Campsite	Chobe River Front	B, B&L	1 Night
Day 12	Victoria Falls Adventure Village	Livingstone (Victoria Falls)	B&B	2 Nights

Key B&B: Bed and Breakfast. B, B&L: Bed, Breakfast and Lunch. L&D: Lunch and Dinner. FB+: Dinner, Bed, Breakfast, Lunch and Activities Daily

Transfers

Date	Pick Up	Drop Off	Vehicle
Day 01	Johannesburg	Khama Rhino Sanctuary Campsite	Transfer
Day 02	Khama Rhino Sanctuary Campsite	Maun	Transfer
Day 03	Maun	Okavango Delta	Transfer
Day 04	Okavango Delta	Maun	Transfer
Day 06	Maun	Moremi/Khwai	Transfer
Day 07	Moremi/Khwai	Savuti area	Transfer
Day 09	Savuti area	Chobe River area	Transfer
Day 11	Chobe River Area	Kasane	Transfer
Day 12	Kasane	Adventure Village, Livingstone	Transfer

Cost of the safari 2025

Cost per person sharing	Single Surcharge	Average nightly rate per person
EUR 1990 + US \$300 local payment per person	EUR 220 per person	EUR 153 per person per night sharing
Option to start in Maun on Day 2 EUR 1940 + US \$300 local payment per person	EUR 215 per person	EUR 150 per person per night sharing

Please Note:

- Option to start in Maun means you can fly in to Maun and join the group on Day 2 for a lower cost (however you then pay for a flight from Johannesburg – Maun own account)
- Single supplement applies to voluntary singles only, single travelers may book on a 'share' basis where they will be nominated to share with a same-sex travel companion on the safari.
- The above rate is subject to change due to major currency fluctuations and fuel surcharges
- Rates subject to National Park Fee increase
- Pre and post safari extensions on application, selected dates connect to Namibia and Zambian safaris with Sunway Safaris.
- If road conditions in the parks prevent travelling through Savuti, then an alternative route will be run via Nxai Pan (it is possible that this may happen between January - April, but it is subject to rainfall, only in special circumstances).

Accommodation

4 nights on safari we stay at designated campsites in national parks and towns. Formal campsites have hot and cold showers, laundry facilities & telephones.

7 nights we "camp wild" without fences in the wilderness areas. On these nights the crew will erect a bucket shower (with hot water off the fire) and a pit latrine (with seat!).

2 nights at a lodge in Livingstone with en-suite rooms and air-conditioning.

Sunway supplies all the camping equipment with the exception of your sleeping bag and pillow. The dome tents we use are 2.2 x 2.2 x 1.8 meters and putting them up or down takes only 5 minutes. Tents have built-in insect nets. We supply mattresses, which are about 5 cm thick, warm and comfortable. The camp chairs have a backrest.

Meals and Drinks

13 breakfasts, 11 lunches and 8 dinners will be provided by the Sunway crew, prepared at the vehicle and eaten around the camp fire except the last 2 breakfasts at the lodge in Livingstone. The remaining meals are in towns (Maun, Kasane, Victoria Falls) where guests purchase their own meal.

The tour leaders do the shopping and meal planning for each group. He/she will always try to obtain fresh produce wherever possible. A rough idea of what these will consist of is: Breakfast - cereals or coffee and toast or the occasional fried breakfast, Lunch - cheese, cold meats, salads on bread or rolls, Dinner - braais (local barbecue), potjies (stews), stir fries etc.

We do cater for special dietary requirements (e.g. vegetarian or allergies.)

We will supply fruit squash served with breakfast and tea or coffee served with breakfast and dinner. All other beverages will be for your own expense. We will not supply bottled drinking water although it is available at many shops on tour.

Transport

For the majority of this safari you travel in a custom-built 4WD Land Cruiser with 12 forward facing seats (of which 8 are "window" seats). Roll up canvas sides allow you to feel part of the bush.

For the first two days from Johannesburg to Maun we use custom-built Sunway Safari trucks with 12 forward facing seats; or (on 10% of tours) Mercedes Sprinter minibuses with 12 forward facing seats and air conditioning.

Limited participation

An essential part of your safari is some participation. From putting up your tent to packing the truck in the morning – it's all part of your adventure and when everyone puts in a little effort the trip will run smoothly. Your tour leaders will do all the meal preparation but we do ask the clients to help (on rotation) with the washing up. If there are 9 or more clients on the tour, then a supply vehicle and camp assistant travel with the group through the national parks (days 6-11). The camp assistant will help with meal preparation and washing up, and make your life a little easier!

Local Payment

The local payment will be collected by your tour leader on departure. The local payment forms part of your overall tour cost, and must be taken into consideration when booking your safari. This is required for certain logistical reasons and also ensures that a portion of the tour costs goes directly into the country you are visiting, thereby benefiting local communities.

Itinerary

Day 1: Khama Rhino Sanctuary Campsite, Serowe (L, D)

Departing Johannesburg at 06:30am we head north into Botswana. We pass Serowe, birthplace of Botswana's first president, Sir Seretse Khama, on our way to the Khama Rhino Sanctuary. This 4300 hectare reserve situated on the Kalahari sandveld, has several natural waterholes and provides prime habitat for white rhino, zebra and wildebeest. We take our first game drive around the open grassland of Malema and Serowe Pans.

Day 1: Breakfast is not included

Day 1: Lunch and Dinner is provided by tour leaders with the help of the group

Day 1: Dinner provided by tour leaders with the help of the group

Includes: Entry Fee to Khama Rhino Sanctuary

Overnight: Campsite - good ablution facilities with hot showers.
Distance/time: 630km, ± 9½ hours, including border formalities & stops for sightseeing & lunch



Situated in Botswana's Central District, the town of Serowe is the main trade and commerce centre of the region. It is Botswana's largest village and serves as the capital of the Bamangwato tribe. Serowe is the birthplace of the country's founding father and first president, Sir Seretse Khama. The town offers all the amenities needed and serves as a convenient stopover for travellers looking to stock up before venturing north to the Makgadikgadi Pans National Park or the Central Kalahari. Visitors can look forward to exploring the town's history at the interesting Khama III Memorial Museum, the official Khama graves, and the London Missionary Society church, with a notable tall steeple, a prominent landmark of the town.

Overnight: Khama Rhino Sanctuary Campsite

The Khama Rhino Sanctuary Campsites in Serowe are provided with a braai pit a standpipe with a birdbath for camper's use. Ablution blocks are located at the campsite for your convenience and flushing toilets are located on site.

Please ensure you obey park rules & arrive for check-in at the campsite before closing hours. Relevant park fees per person and per vehicle are to be settled additionally to your campsite booking. Wood for fires and braais can be bought here, as well as ice, cold drinks and basic provisions. Also found on-site is an excellent spot for day-visitors to relax and enjoy the peace of the Sanctuary. Visitors can make use of seating, tables, water and braai-stands for their picnic.



Day 2: Camping, Maun (B, L)

We drive through the Kalahari to Maun, the gateway to the Okavango Delta. Situated on the banks of the Thamalakane River, Maun is a bustling frontier town where we prepare for the delta excursion. After setting up camp we have a relaxing afternoon at the swimming pool.

Day 2: Breakfast and Lunch provided by tour leaders with the help of the group

Day 2: Dinner will be an own expense meal at a local restaurant

Overnight: Campsite - good ablution facilities with hot showers, swimming pool, restaurant & bar

Distance/time: 540km, ± 8 hours, excluding stops for sightseeing



Situated along the banks of the Thamalakane River, in the North-West District of Botswana, Maun, a term that derives its name from the San language, meaning "the place of reeds," serves as the administrative town center of Ngamiland. Maun is notoriously known as a "Frontier" town, and is referred to as the 'gateway' to the Okavango Delta and Moremi Game Reserve as most tourists enter these destinations through this buzzing town.

Although classified as one of the fastest growing towns in Botswana, and boasting one of the busiest airports in Southern Africa, Maun still retains much of its old/traditional (village-like) character, which encompasses the old judicial court of chiefs who are still active. Reed and mud hut infrastructures are seen in and around town as well as donkeys/carts and livestock. However, numerous hotels, lodges, bed and breakfasts, shopping malls, post offices, a museum and a big hospital are available too. Maun also serves as the headquarters for the safari industry, tour operators and air charter companies that offer trips into the Okavango Delta and National Parks such as Moremi Game Reserve, Khwai, Savute, Makgadikgadi, Chobe, Nxai Pan to name a few, as well as monumental historical sites like the Tsodilo Hills. Opportunities to visit nearby cultural villages can also be arranged from this central point.



Day 3-5: Okavango Delta Campsite, Okavango Delta (B, L, D)

Our local guides will take us deep into the heart of the Okavango Delta on mekoro (dugout canoes). The delta forms as water flows from the Angolan highlands out over the Botswanan flat Kalahari Desert sands creating a delicate, green oasis for birds & wildlife. We will camp wild on remote islands in this amazingly dynamic environment & enjoy bush walks, bird watching & swimming in the clear water. Camping with our local guides we learn more about their lifestyle & culture.

Day 3, 4: Breakfast provided by tour leaders with the help of the group

Day 3, 4: Lunch provided by tour leaders with the help of the group

Day 3, 4: Dinner provided by tour leaders with the help of the group

Includes: Entrance to Okavango Delta, mekoro excursion, guided game walks with local guides

Overnight: Day 3 & 4: Wild camping – basic facilities with bucket shower. You will need to bring a towel.

Distance/time: 2 hour 4WD transfer into the Delta, each way



The Okavango Delta is where the wild things are: an immense, waterlogged oasis alive with elephants and birdlife, adrift in the middle of Kalahari sands. The real magic of the Delta lies in its water, trickling through from far away highlands, and spreading across the channels and floodplains.

During winter in the Kalahari, when the sun has baked the earth bare and turned the desert its driest, water fills the Okavango; transforming the floodplains into a Noah's Ark of African wildlife.

As the water brings life to the delta, its local residents shape and recreate it. Termites slowly build mounds into islands, germinated with palm trees by passing elephants. Waterways open and close on the whim of wide-bottomed hippos, carving out channels where they crash through reeds, and leaving room behind them for exploration by mokoro.

The Okavango has many faces, which change throughout the year, prompted by that most unpredictable diva of all: the weather. Water levels rise and drop, expanding and shrinking islands, while animals move where the life is easiest and the grass greenest. In a few days, a sandy road driven by vehicle can become a waterway of unknowable depth, prompting a safari by boat instead.

Where and when you stay in the Okavango Delta will hugely influence what you do in the bush each day, the animals you're most likely to see and finally, the safari experience you'll have.

The delta's watery heart is best discovered by mokoro through shallow channels and floodplains, as well as crossing the islands on foot. For less water and more of the big game, visit a camp on its drier edges (including Moremi Game Reserve and the Khwai Community Area), jump on a vehicle and seek out the animals hiding in the woodlands.

Day 5: Camping, Maun (B, L)

After a morning in the Okavango Delta, we retrace our steps to Maun in the late afternoon of day 5 and have time for an optional (own expense) game flight over the Okavango, which will reveal a different aspect of the delta.

Day 5: Breakfast provided by tour leaders with the help of the group

Day 5: Lunch provided by tour leaders with the help of the group

Day 5: Dinner will be an own expense meal at a local restaurant

Overnight: Good ablution facilities with hot showers, swimming pool, restaurant & bar
Distance/time: 2 hour 4WD transfer into the Delta, each way
Optional Activities: Scenic flight over the Okavango Delta (price TBA) depending on number of people in each aircraft)

Day 6-8: Camping, Moremi Game Reserve (B, L, D)

We have 2 nights in the Moremi/Khwai area with time to explore the various habitats. We spend our time on game drives watching the plentiful wildlife including wild dog, elephant, hippo, buffalo, lion & other game. Moremi Game Reserve rates as one of the leading wildlife areas of the world and we take our open 4WD vehicle into Moremi for fantastic game viewing! Grasslands, floodplains, forests, lily lagoons and winding water channels combine to form a variety of game viewing habitats

Day 6, 7 Breakfast, Lunch and Dinner provided by tour leaders with the help of the group

Includes: Entrance fees, morning and afternoon game drives in open 4WD game viewing vehicle
Overnight: Wild camping – basic ablutions with bucket shower
Distance/time: 150kms ±4 hours, excludes game drives & stops for wildlife viewing (Maun – Khwai/Moremi)



The Moremi Game Reserve is all about searching for big game; where the habitats are as diverse as the wildlife itself. Water-adapted antelopes and wary-eyed buffaloes spill out into floodplains, behind towering woodlands where leopards hide on the high branches. Dead trees cast silhouettes over elephant-filled savannas a stone's throw from papyrus-fringed channels stretching out to the delta beyond.

When you arrive in the Moremi Game Reserve, it's anyone's guess what you'll find lurking in the long grass. From wild dogs stalking waterbucks to long sunsets by a hippo-filled lagoon, the scenes will live on in memory long after the journey home.

Kick up sharp smelling clouds of dust on a morning drive, disturbing pockets of warm air in the reeds as you splash through water crossings in pursuit of a distant lion's call. Pause by the edge of large lagoons, squinting to catch mischief making hyenas as they emerge from the trees to drink.

When you get sick of game drives, discover the channels by boat while Squacco herons fly alongside you into the wind. Watch a lazy sunset with the blue-cheeked bee eaters before returning to dry land for more hardcore bush exploration.

As Moremi Game Reserve is bound by national park rules, activities here are limited to game drives during hours of daylight with no off-roading, and boat cruises on the permanent channels.

While most of the reserve is open to the public, two private lodges sit in the Mombo Concession to the north of Chief's Island, surrounded by the waters of the Okavango Delta. Boating isn't possible here, instead the area offers the ultimate in dry-land game viewing. Hailed as Botswana's predator capital, this exclusive corner is closed to outsiders and home to the big five, where the invitee list fills up years in advance.



Day 8-10: Camping, Savuti - Chobe National Park (B, L, D)

Today we head up to the Savute Area for a further 2 nights in fantastic game viewing areas. Moving north over the sand ridge and into the Mababe depression we arrive at the Savuti Marsh. This open grassland area attracts herds of zebra and wildebeest, which in turn draw the large lion prides for which Savuti is famous. We camp wild in the central Chobe National Park at either Savuti or Zwei-Zwei.

Day 8, 9: Breakfast, Lunch and Dinner provided by tour leaders with the help of the group

Includes: Entrance fees, morning and afternoon game drives in open 4WD game viewing vehicle
Overnight: Wild camping – basic ablutions with bucket shower
Distance/time: 180kms ± 5 hours, excludes game drives & stops for wildlife viewing (Khwai – Savuti)



When it comes to Botswana, Savute breaks all the rules: both for animal behaviour and for habitats. Here, lions hunt elephants, leopards take to fishing, the grasslands are vast and open and rocky hills punctuate the flat terrain.

Savute has proved itself somewhat of an enigma over the decades. During years of abundance its marsh fills with water, fed by the Savute Channel. The water weaves its way here from Angola via a chain of rivers and lagoons, spilling out into the marsh and drawing huge herds of elephants, wildebeest, zebras and buffalos.

In drier years, the channel shrinks into small pools and can evaporate completely, leaving the marsh dry and sending wildlife to the waterholes for water, where the tension between plains game and predators heats up over a parched and dusty landscape.

Wherever the plains game goes in Savute, the predators follow close-by, learning tricks of survival to adapt to the marsh's ever changing nature. Whether the water flows here or not is anyone's guess. The channel and marsh have a life of their own, independent both of the seasons and the annual rainfall.

Savute doesn't just offer a safari; it's also a feast for the eyes. Whitewashed skeletal trees set against green grass and huge blue skies, blinding red sunsets that spill purple and orange across the bush, and endless horizons that fade into a hazy mirage with the heat.

As Savute is part of Chobe National Park, a safari here is limited to game drives only. With the diversity of habitats, wildlife and landscapes that the marsh has to offer however, you'll still find yourself wishing you had more time to see it all.

Day 10: Camping, Chobe National Park (B, L, D)

We drive north to the Chobe River area with game viewing en-route. Chobe National Park attracting some of the largest herds of elephant in Africa.

Day 10: Breakfast, lunch and dinner provided by tour leaders with the help of the group

Includes: Entrance fees, morning and afternoon game drives in open 4WD game viewing vehicle
Overnight: day 10 wild camping – basic ablutions with bucket shower
Distance/time: 150kms ± 5½ hours, excludes game drives & stops for wildlife viewing (Savuti – Chobe)



The Chobe Riverfront is an elephant mecca; home to the largest density of African elephants in the world. Travel here during winter and you'll fast run out of fingers and toes while you count them drinking at the riverbanks and socialising out on the floodplains.

Thanks to its ease of access from Victoria Falls, the Chobe Riverfront is the busiest part of Botswana (though still a much quieter affair than most South or East African safaris). What Chobe lacks in solitude during the busier months, it more than makes up for with quality game viewing.

Chobe will leave you feeling tiny as giant elephant bulls stroll up next to your vehicle or snorkel alongside your boat. It will make you feel lost as hundreds of hippos and buffaloes crowd you out on the floodplains. It will put your heart in your throat as prides of lions stalk antelopes by the water's edge, and it will leave you alone with your thoughts while the classic red sunsets melt over the river to a soundtrack of whistling fish eagles.

Chobe is not just a great introduction to Botswana. It also makes a rewarding repeat journey once you've ticked off the big stuff. It's a place to search for the rare sable antelope, to spot that gem from the birders' bucket list and to explore the remoter corners.

Where you stay in Chobe makes a huge difference to your safari experience. The most affordable options are at bigger hotels in a town setting where you'll share your game drives with a few more vehicles. On the more exclusive end, stay in a wilder area in or around the park, listen to the sounds of the bush at night and get a head start on accessing the park for activities.

Day 11: Camping, Kasane (B, L)

In the early morning we search for game on the flood plains of the Chobe River. The late afternoon game viewing "sundowner" cruise is a highlight as we see the mighty elephant herds returning to the Chobe River to quench their thirst. We camp at Kasane on the Chobe River for night 11.

Day 11: Breakfast. lunch and dinner provided by tour leaders with the help of the group

Includes: Entrance fees, morning and afternoon game drives in open 4WD game viewing vehicle & sunset cruise on Chobe River

Overnight: campsite - good ablution facilities, hot showers, swimming pool, bar & restaurant

Day 12-14: Victoria Falls Waterfront, Livingstone/Victoria Falls (B)

Overnight for 2 nights in Zambia near Livingstone town on the banks of the Zambezi River. Enjoy a spectacular walk through tropical vegetation to the very edge of the "Mosi oa Tunya" or "the smoke that thunders" - Victoria Falls. Opportunities to white water raft on the mighty Zambezi River, bungi jump, or take a "flight of angels" (own expense).

Day 12: Breakfast provided by tour leaders with the help of the group

Day 13: Breakfast provided by the lodge

Day 12, 13: Lunch will be an own expense meal

Day 12, 13: Dinner will be an own expense meal at a local restaurant

Includes: Entrance Fees to see the Victoria Falls

Overnight: Adventure Village Rooms – twin en-suite, hot showers, swimming pool, bar & restaurant

Distance/time: 85kms – 1 hour, excluding border formalities (which can take 2 to 4+ hours)

Optional Activities: White water rafting, sunset cruises, scenic flights & many more



At Victoria Falls, the earth splits open and swallows one of Africa's greatest rivers, the mighty Zambezi, creating the largest sheet of falling water on earth. As the water hits the narrow depths of the Batoka Gorge beneath, it blasts a cloud of mist skywards, lending the falls their local name 'mosi-oo-tunya' (the smoke that thunders). When the Zambezi is at its fullest, the mist hangs a permanent raincloud above the falls, showering visitors on even the sunniest of days and visible for miles around.

Above the falls on the upper Zambezi, boats cruise the tranquil water at sunset while the distant spray catches the fading light downstream. Below the falls, the Batoka Gorge's rocky walls funnel the lower Zambezi into a chain of world-class rapids, prime for white water rafting.

Aside from being a UNESCO world heritage site and a natural world wonder, Victoria Falls also forms a natural border between Zimbabwe and Zambia. The falls can be seen from both countries, and for the most part the same activities are offered on both sides, from helicopter scenic flights to village visits and souvenir shopping.

Whether your idea of getting away from it all is a relaxed high tea in colonial grandeur or a heart-stopping bungee jump off a bridge, Victoria Falls keeps both the faint of heart and the most insatiable of adrenalin junkies busy for days.

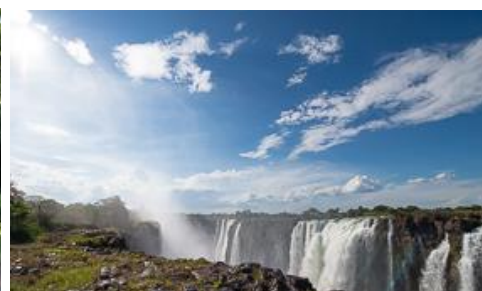
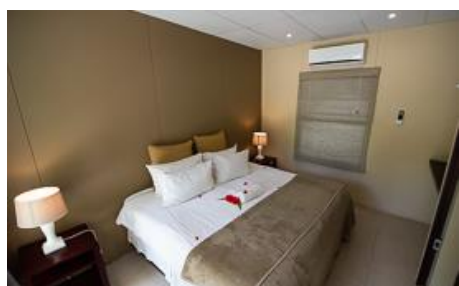
From Zambia, a side on view of the falls is on offer with views into the Batoka Gorge, as well as the possibility of perching yourself at the edge of the falls on the vertigo-inducing Livingstone Island.

From Zimbabwe, you'll get a full-frontal view of three quarters of the falls' 1.7km wide curtain of water from viewpoints and footpaths meandering through a rainforest kept hot and humid by the spray of the falls.

Overnight: Victoria Falls Waterfront Adventure Village

The Victoria Falls Waterfront Adventure Village is set among large trees in shady surroundings. Located in the Adventure Village garden, these individual rooms are ensuite with air-conditioning, WiFi and include a full English breakfast with all the facilities of The Victoria Falls Waterfront at your fingertips.

The deck, bar and restaurant overlook the spray from The Victoria Falls to your left, and offer the best sunset views over the Zambezi River to your right. And when the river is low (July to December) you may see elephants crossing over from/to the Siloka island opposite. There are two swimming pools and lovely gardens in which to relax.



Day 14: End of Itinerary

Tour ends at 08:00 after breakfast. Transfers to local airports are available.

Day 14: Breakfast provided by the lodge

Travel Information

- Please take note of our Booking Terms & Conditions. It will be understood that these have been read and accepted by you on receipt of confirmation of the booking.
- For your safety and peace of mind, on confirmation of your booking, we strongly recommend that Travel Insurance is arranged to cover cancellation, curtailment, emergency evacuation, medical and repatriation expenses, damage/theft/loss of personal luggage, money and goods.
- Road and air transfers and activities are quoted on a seat basis (shared) unless otherwise requested or specified. Passengers may have various stops en-route to a destination. The transfer or charter company reserves the right to specify departure and arrival times. Private charters can be requested at an additional cost.
- Passengers weighing over 100kg should please advise us at the time of booking, as we may need to cost in an additional seat on internal flights for your safety and comfort.
- The costs are subject to change at any time due to fluctuations in fuel costs, taxes, levies, government regulations, rate of exchange and factors that are imposed upon us by our suppliers that are beyond our control.
- Please advise us of the ages of children (under 18) travelling, together with their date of birth, at the time of booking as not all lodges accept children and there may be restrictions or conditions which can affect pricing.
- We recommend that optional activities be booked in advance at time of confirmation to guarantee

availability e.g. Helicopter Flight of the Angels in Victoria Falls

- Please allow a minimum 2-3 hours connection time in Johannesburg for international flights. It is important that you check that your flight tickets have been issued in your full names as per your passport.
- We require full payment for international and domestic scheduled flights at the time of confirmation e.g. Air Botswana Johannesburg to Maun, Proflight Livingstone - Lusaka and so on. We are not able to guarantee any flights before receipt of payment as seats are often held for a limited period before ticketing is required so this is a time sensitive issue. Air tickets are considered non refundable unless otherwise specified. Please confirm the details with your consultant at the time of booking.

Passports, Visas and Travel Documentation

Your passport must have at least 6 months validity before the expiry date and 6 empty pages (not including the endorsement pages). The onus is upon guests to ensure that passports and visas are valid for the countries visited. Please note that certain visas can take up to 3 months to be processed so please consider this when booking.

If you are travelling with children through Southern Africa please be aware that you will be required to have certified copies of their unabridged birth certificates, and passports on hand. If you are not their legal parents, or if only one of you is travelling – you will need to have consent in the form of an affidavit giving you permission to travel with the child.

Inter-camp transfers

Due to the vast distances involved in travelling in the remote areas of Southern Africa - your itinerary may include road, boat and air transfers in small aircraft.

On shared air transfers, all the flight times between lodges are arranged a few days before the flights take place to avoid endless schedule changes. The lodge or camp where you are staying will be advised of your departure time the day before travel and will ensure that you are at the airstrip on time. Although every effort will be made to ensure that guests are transferred together in one vehicle / aircraft, this cannot be guaranteed, especially with larger groups. The aircraft used for inter-camp transfers vary in size from 3, 5, 7 and 12 seater aircraft. We recommend that guests susceptible to motion sickness take appropriate precautions due to flying conditions.

Weight & Luggage Restrictions

There are strict luggage restrictions in place on any itinerary, which includes light aircraft transfers for safety reasons. Luggage, including camera equipment and hand luggage, is restricted to 20 kg per person travelling on seat rates. Only soft bags will be accepted - no hard suitcases or bags with wheels can be transported, as they physically cannot fit into the aircraft.

The maximum dimensions of the soft bags that can be accommodated are as follows: 25cm/10 inches wide x 30cm/11 inches high and 62cm/24 inches long. Please keep in mind that the baggage compartments on the light aircraft are only 25cm high, so the pilots must have the ability to manipulate the bag into the compartment. Note that laundry can be done on a daily basis at most camps and lodges.

Should you arrive with excess baggage without prior warning, your baggage could be delayed, as we may have to fly the baggage into camp at a later stage at considerable extra cost to you. However, should you notify us in advance that your baggage will exceed the limit; we may be able to assist you with alternative arrangements e.g. storage or purchase of additional luggage allowance.

For bookings including flights within Zambia & Mozambique, please note luggage weight exceptions under destination information.

Lost Luggage

Lost luggage on international flights is a common problem facing travellers today. We suggest that you pack a small bag with your essentials, including any life sustaining medication, which can be carried with you as hand luggage. If travelling as a couple or family we suggest that you split your clothing between bags so that

if one bag gets lost, you will have basic items on hand to see you through the first couple of days while we try and recover your lost baggage.

Please note that whilst we try our utmost to locate and re-unite you with your bags, that there may be charges involved in getting your bags to remote areas, which would be for your cost. Please remember to report the lost luggage to the airline as soon as you make the discovery - the airline will issue you with a Baggage Claim Form, which you will need in order for us to trace the bag.

Health and Dietary

Please note that you are travelling to a Malaria-risk area. Please consult your doctor for medical advice prior to travel.

Although usually safe to drink, we do not recommend that you drink the tap water. Filtered water is available at the camps and lodges.

The camps are isolated and generally have limited power supply and access to supplies. Please notify us in advance of any special dietary requirements, medical conditions and medical equipment you may need with you. Please carry critical medication in your hand luggage.

Yellow Fever Certificates - are only required if you have travelled to a Yellow Fever area as designated by the World Health Organisation. Please check with your Travel Clinic or doctor well in advance of your departure date.

General Travel Information

- There is no or limited electricity and cell phone coverage in the camps and lodges excluding major towns and cities. All camps do make provision for charging cameras and electronic devices.
- Please ensure that you do not pack any valuables, cameras, cash, laptops in your checked in luggage – these should be kept on your person at all times.
- Please notify us immediately of any changes to flight arrival and departure details as this affects onward transfer arrangements.
- Please note that most camps & lodges in Botswana do not have double beds. Twin beds are pushed together to make up a double room.
- Although every effort is made to adhere to schedules the company reserves the right and in fact is obliged to occasionally change routes and camps on safaris as dictated by changing conditions or unforeseen circumstances.
- By confirmation of the booking, you acknowledge that you have been made aware and accept that the tour carries inherent risks, and that you voluntarily assume all risks which are associated with the tour. You will be required to sign indemnities at the various camps, lodges and service providers, and abide by their operators code of conduct in order to ensure your safety.
- If you have any cause for complaint while travelling, you should immediately bring it to the attention of the camp manager and / or our Maun office that will attempt to resolve the situation immediately.
- Do not remove any animal artefacts, flora or fauna from any of the areas you visit, as there are strict international regulations on the export of such items.

Please refer to the **Safari Information** for further details on preparing for your safari.



Visa

Some visitors need to apply for visas before arrival please check with your Embassy.

For more information on visas please visit the following address:

Botswana Government - Visa Requirements

BORDER CROSSINGS**Currency**

The currency of Botswana is the Pula (BWP). US\$ Dollar notes (2007 Series onwards), and Visa and MasterCard are accepted.

Internal Flights and Transfers

Due to the remote areas the camps and lodges are based in, transfers between camps may take place by boat, mekoro, game drive vehicle or light aircraft.

Flight times around Botswana | Approximate flying times

Flight duration times (as listed below), are to be used as an average guideline. They are based on actual flying time, and passengers may have various stops en-route to a destination affecting the total travel time. Your pilot will brief you of your flight route and duration during the safety briefing.

Maun - Delta: 15 to 30 minutes

Delta – Delta: 10 to 20 minutes

Delta - Linyanti: 30 to 40 minutes

Maun – Linyanti: 50 to 60 minutes

Linyanti - Kasane: 40 to 60 minutes

Maun/Delta - Kasane: 60 to 80 minutes

Maun - Makgadikgadi/Desert: 40 to 60 minutes

Departure Taxes

Departure taxes are included in ticket prices.

Weight & Luggage Restrictions

See Booking Information

**Currency**

The official currency in Zambia is the Zambian Kwacha. US\$ Dollar notes (2007 Series onwards), and Visa and MasterCard are accepted.

Visa

Fees for Visitors to Zambia who are eligible to receive their visa on entry US\$ 50.00 for single entry/ US\$ 80.00 for double entry.

Some visitors need to apply for visas before arrival - please check with your Embassy. For more information on visas please visit the following address: [Zambian Visa Requirements](#)

ALWAYS have cash available in the correct US\$ amount at all ports of entry - in the event where credit card facilities/ ATM's are not operational.

Kaza Univisa – Zimbabwe and Zambia

Travellers planning to visit both Zimbabwe and Zambia should apply for a UniVisa (also known as KAZA visa). The visa can be obtained in advance, as well as at ports of entry, but cannot be guaranteed.

The UniVisa allows travellers 30 days travel within both Zambia and Zimbabwe, and is also valid for daytrips to Botswana. Travellers must remain within Zambia & Zimbabwe for the visa to stay valid. Visiting Botswana as a daytrip will not affect the visa's validity, provided travellers return to Zambia or Zimbabwe the same day.

Internal Flights and Transfers

On fly-in safaris, movement between the game areas is done on a scheduled basis by Proflight Zambia unless otherwise specified. Proflight uses 12, 18 and 29 seater aircraft for their flights. Transfers between camps in the same game area may be done by light aircraft, but mostly by road/game drive transfer or by boat on a shared seat basis.

Flight times around Zambia | Approximate Proflight flying times

Livingstone to Lusaka 1 hour

Lusaka to Royal or Jeki Airstrip for Lower Zambezi 35 min

Lusaka to Mfuwe Airport for South Luangwa 1 hour 10 minutes

Mfuwe Airport to Lilongwe Airport 1 hour

All flights Livingstone to Mfuwe/Lower Zambezi are all via Lusaka and vice versa

Departure Taxes

Departure taxes are included in ticket prices.

Weight & Luggage Restrictions

Luggage allowance on Proflight flights is restricted to 23 kg per person travelling on Y- class seats. For any other class or charter flight, the luggage allowance is 15kg per person. Excess baggage will be charged extra for. Any bag over 32kg will not be flown. Only one piece of hand luggage with a maximum weight of 5kg is allowed per person. Please note that a handbag is considered as a piece of hand luggage.
