



# SAFARI SPECIALISTS



**BOTSWANA IS OUR HOME SAFARIS ARE OUR PASSION**

## 12nts Jewels of Africa

Zambezi National Park - Chobe National Park - Okavango Delta - Johannesburg - Vilanculos  
13 Days / 12 Nights



[Click here to view your Digital Itinerary](#)

### Introduction

Start	Accommodation	Destination	Basis	Duration
Day 1	Old Drift Lodge	Zambezi National Park	FI	<b>2 Nights</b>
Day 3	Chobe Game Lodge	Chobe National Park	FI	<b>2 Nights</b>
Day 5	Kanana	Okavango Delta	FI	<b>2 Nights</b>
Day 7	African Rock Hotel & Spa	Johannesburg	D,B&B	<b>1 Night</b>
Day 8	Santorini Mozambique	Vilanculos	B&B	<b>5 Nights</b>

### Key

B&B: Bed and Breakfast. D,B&B: Dinner, Bed and Breakfast. FI: Fully Inclusive - Bed, All Meals, Fees and Activities

## Transport

### Flight Information

Date	Flight	Departure Airport	Arrival Airport
Day 5	Charter Flight	Kasane Airport [BBK]	Kanana
Day 7	Charter Flight	Kanana	Maun International Airport [MUB]

### Transfers

Date	Company	Pick Up	Drop Off
Day 1	Wild Horizons	Victoria Falls Airport	Old Drift Lodge
Day 3	Wild Horizons	Old Drift Lodge	Chobe Game Lodge
Day 5	Chobe Game Lodge	Chobe Game Lodge	Kasane Airport
Day 7	African Rock Hotel	OR Tambo Johannesburg Airport	African Rock Hotel
Day 8	African Rock Hotel	African Rock Hotel	OR Tambo Johannesburg Airport
Day 8	Santorini	Vilanculos Airport	Santorini Mozambique
Day 13	Santorini	Santorini Mozambique	Vilanculos Airport

PACKAGE SEASON	PP SHARING	SINGLE SUPP
11 January – February & November – 20 December 2025	USD 8,070	USD 2,210
March 2025	USD 8,790	USD 2,130
April – May 2025	USD 9,600	USD 2,920
June – October 2025	USD 10,850	USD 3,980

### Special notes

- Package costs exclude all scheduled flights into Victoria Falls, from Maun to Johannesburg and Johannesburg – Vilanculos - Johannesburg. Only internal transfers are included from Victoria Falls through to Maun and the airport transfers in Johannesburg and Vilanculos.
- Please note **Kanana is closed until 2 April 2025** – discuss with your consultant for alternative options.
- Santorini Vilanculos pricing is based on a Santa Carolina, optional room upgrades available
- Please note the package is based on a pay 4/stay 5 offer at Santorini Mozambique which is not applicable from 20 December – 10 January.
- Honeymoon discounts apply but cannot be combined with other specials, please contact us for a Honeymoon quote \* conditions apply
- The single supplement is based on accommodation only and any SOLO travellers may incur additional transport costs
- Please note that where a booking crosses over 2 different rate periods e.g. Oct & Nov, neither rate is applicable – please request a special quote

- The above rate is subject to change due to major currency fluctuations, fuel surcharges and increases in national park fees (see below)
- Subject to availability at the time of booking

## Included



### Travel for Impact – Responsible Travel

By booking this itinerary, you donate USD\$2 for every night of travel per person on the booking. Your donation goes to **Travel for Impact (TFI)** and ensures that your safari has a meaningful impact on the people who live locally. For more information on giving back to your chosen destination of travel, visit [www.travelforimpact.com](http://www.travelforimpact.com)



### Okavango Air Rescue

Please note that we include a fee into all our packages for a local medivac in case of an emergency. Please discuss further details with your consultant and for more information, visit <http://www.okavangorescue.com/>

## Day 1-3

### Old Drift Lodge, Zambezi National Park



Zambezi National Park is a National Park located upstream, just 5km from Victoria Falls on the Zambezi River in Zimbabwe and comprises 40km of Zambezi River frontage. It was split off from Victoria Falls National Park in 1979 and is 56,000 hectares (140,000 acres) in size. The park is bisected by a road to Kazungula, dividing it into a riverine side and a Chamabondo Vlei side. Most of the park is within the ecoregion of Zambezian and Mopane woodlands, while a small portion in the south is within the Zambezian Baikiaea woodlands.

The Zambezi National Park plays host to a wide variety of larger mammals including African elephant, lion, Cape buffalo and leopard. In addition to these charismatic members of the "big 5" there are herds of sable antelope, common eland, common zebra, Southern giraffe, greater kudu, waterbuck and impala. In addition, many species of smaller wildlife can be seen here.

## Day Itinerary

Upon arrival at Victoria Falls Airport proceed through Customs/Immigration and collect your luggage before you are met outside the Terminal building by a local representative for the onwards shared road transfer to

The Old Drift Lodge where you spend two nights on a fully inclusive basis (activities are shared with other guests).

### Overnight: Old Drift Lodge

**Includes:** meals, selected activities, local drinks, return Victoria Falls/Livingstone airport transfers, conservation levy park fees & town shuttle

**Excludes:** premium drinks, additional activities, laundry

**Included Activities:** morning and afternoon game drives and river safaris, bush walks, guided Tour of the Falls

Old Drift Lodge nestles in the untouched, beautiful surrounds of the Zambezi National Park, only 4.5km upstream from Victoria Falls. An abundance of wildlife inhabits the park which can be explored by road, river or on foot. The region's rich natural heritage is reflected in the lodge's fourteen graceful tented rooms. All carefully styled rooms feature spacious, ensuite bedrooms with indoor/ outdoor showers, outdoor "bath with a view", complimentary mini bar drinks in rooms, deck and private plunge pool. Four are ensuite family rooms.

With sweeping 360° views from the splendour of the Zambezi River through to a waterhole (and back to the river), the main lodge area boasts a breath-taking dining and bar setting. Game drives follow the river course whilst pontoon boat safaris offer unique views of wildlife along the banks as well as in the water. Large mammals including giraffe, eland, zebra, elephants and buffaloes roam the park, as do secretive predators. Guided bush walks afford fascinating ways to discover the smaller creatures, plants and numerous birds of the park. A guided Tour of the Falls bring guests incredibly close to the awe-inspiring Falls.

Zambezi National Park is a national park located upstream, just 5km from Victoria Falls on the Zambezi River in Zimbabwe and comprises 40km of Zambezi River frontage. It was split off from Victoria Falls National Park in 1979 and is 56,000 hectares (140,000 acres) in size. The park is bisected by a road to Kazungula, dividing it into a riverine side and a Chamabonda Vlei side. Most of the park is within the ecoregion of Zambezian and Mopane woodlands, while a small portion in the south is within the Zambezian Baikiaea woodlands.

The Zambezi National Park plays host to a wide variety of larger mammals including African elephant, lion, Cape buffalo and leopard. In addition to these charismatic members of the "big 5" there are herds of sable antelope, common eland, common zebra, Southern giraffe, greater kudu, waterbuck and impala. In addition, many species of smaller wildlife can be seen here.

Over 400 species of birds have been recorded within the Zambezi National Park. Pel's fishing owl, African skimmer, collared palm thrush, lanner falcon, goliath heron, African finfoot, rock pratincole and long-toed lapwing are considered to be among the speciality birds of the park. Aside from birds and land animals, there are 75 species of fish located in the park, including the famous tiger fish.

The easiest way to access the Zambezi National Park is via the Zambezi River Game Drive, which is extensive network of roads along the banks of the Zambezi and is accessed through the main gate. There is a 25-kilometre Chamabondo Game Drive that can take the visitor into the wilder the southern part of the Park, and which starts 5 kilometres south of Victoria Falls town; just off the main Victoria Falls to Bulawayo road.

**Airport Transfer Time:** 40 minutes from Victoria Falls Airport



## Day 3-5

### Chobe Game Lodge, Chobe National Park



The Chobe River Front is a remarkable wildlife area due to the permanent water source of the Chobe River. However its accessibility from Kasane and neighbouring towns of Victoria Falls and Livingstone has created quite a busy tourist area with larger hotels and lodges than you find in the more remote Okavango Delta. The spectacle of all the animals coming to drink and frolic at the water's edge is one to behold, particularly in the dry season (May - Oct) where water is scarce away from the river. It is an area famous for its abundance of elephants, a variety of predators and, in addition, you are likely to see herds of buffalo and possibly even roan and sable antelope. In the rainy season (Nov - Apr) the game is much less concentrated at the river as the wildlife spread throughout the greater area of Chobe National Park due to availability of surface water from nearby pans. This assists the vegetation on the river banks in recovering from the massive herds that are attracted to the area in the dry months. The summer rains bring beautiful wild flowers, exquisite scenery, impressive bird life and an abundance of young animals usually born around November/December. The spectacular Chobe sunsets alone are worth a visit to the area. Please note that activities are restricted within the national park in accordance with government rules and regulations: these include no driving off-road, no walking and no driving after dark.

Chobe Game Lodge is the only lodge situated within the National Park. The remainder of the lodges, hotels and guesthouses in the Chobe area are located along the river in the town of Kasane, adjacent to the park. In addition there are some lodges situated further out of Kasane and in the Chobe Forestry Reserve, namely Muchenje Safari Lodge and Elephant Valley Lodge for those looking for something in more of a bush setting.

### Day Itinerary

Following breakfast and a possible morning activity (time permitting) you will be met in the main area by a representative from Wild Horizons for your cross-border road transfer into Botswana and further out to Chobe Game Lodge. You will stay here for two nights on a fully inclusive basis (activities are shared with other guests).

### Overnight: Chobe Game Lodge

**Includes:** meals, local drinks, activities, park fees, laundry and Intermittent WiFi .

**Excludes:** premium drinks

**Activities:** game drives and boating

Chobe Game Lodge is the only permanent lodge situated within the boundaries of Chobe National Park. Built along the riverbanks with spectacular views of the Chobe River and floodplains, this well-established lodge is a prime venue for guests to explore the Chobe National Park

Guests are accommodated in a relaxed and luxurious environment in tune with a timeless Africa. Chobe Game Lodge has forty eight rooms which are river facing, offering air conditioning and overhead fans, a complimentary mini bar, en-suite bathrooms and tea and coffee making facilities. All rooms have a private terrace.

Other facilities at the lodge include a large swimming pool with terrace, a riverside boma area, a fully equipped conference room, internet lounge, gym, beauty salon, stylish bar with an outside terrace overlooking the Chobe River and a cigar bar with a champion sized billiard table. Chobe Game Lodge also has a reference library with lounge and therefore offers plenty of areas for you to relax between game drives. Meals are catered for at the terrace restaurant overlooking the Chobe River.

Your days will be spent exploring the Chobe National Park in open 4X4 safari vehicles led by professional guides, and boat cruises along the Chobe River.

This property is located within the Chobe National Park, providing the prime bush location for exploring the Chobe Riverfront. The location inside the park gives guests the advantage of a head start on vehicle traffic entering the Riverfront from Kasane for activities, and therefore a more exclusive Chobe safari.

**Airport Transfer Time:** 30 minutes



## Day 5-7

### Kanana, Okavango Delta



The Okavango Delta is where the wild things are: an immense, waterlogged oasis alive with elephants and birdlife, adrift in the middle of Kalahari sands. The real magic of the Delta lies in its water, trickling through from far away highlands, and spreading across the channels and floodplains.

During winter in the Kalahari, when the sun has baked the earth bare and turned the desert its driest, water fills the Okavango; transforming the floodplains into a Noah's Ark of African wildlife.

As the water brings life to the delta, its local residents shape and recreate it. Termites slowly build mounds into islands, germinated with palm trees by passing elephants. Waterways open and close on the whim of

wide-bottomed hippos, carving out channels where they crash through reeds, and leaving room behind them for exploration by mokoro.

The Okavango has many faces, which change throughout the year, prompted by that most unpredictable diva of all: the weather. Water levels rise and drop, expanding and shrinking islands, while animals move where the life is easiest and the grass greenest. In a few days, a sandy road driven by vehicle can become a waterway of unknowable depth, prompting a safari by boat instead.

Where and when you stay in the Okavango Delta will hugely influence what you do in the bush each day, the animals you're most likely to see and finally, the safari experience you'll have.

The delta's watery heart is best discovered by mokoro through shallow channels and floodplains, as well as crossing the islands on foot. For less water and more of the big game, visit a camp on its drier edges (including Moremi Game Reserve and the Khwai Community Area), jump on a vehicle and seek out the animals hiding in the woodlands.

## Day Itinerary

Following breakfast and a possible morning activity (time permitting) you will road transfer to Kasane Airport where you will be assisted by a porter with check in for your light aircraft transfer to the Okavango Delta. The following two nights you spend at Kanana Camp on a fully inclusive basis (activities are shared with other guests).

Please note that the flight is booked on a 'seat rate' basis and therefore flight times are not scheduled until the day prior to flying, lodge managers will arrange your activities and transfers accordingly. Please note that there is a strict luggage restriction on all light aircraft flights of 15kg per person in soft bags, plus hand luggage.

## Overnight: Kanana

**Includes:** meals, local drinks, activities, park fees & laundry

**Excludes:** premium drinks

**Activities:** game drives, mokoro, boat cruises (July-October & water level dependent) and walking

Kanana Camp is set in the south western delta amongst grass covered islands formed by fertile eroded termite hills dotted with fig, palm and jackal berry trees. The Kanana area encompasses a necklace of islands on the Xudum River, northeast of Pom Pom lagoon and is incredibly picturesque with winding waterways meandering through open lagoons.

This traditional camp has an intimate and personal atmosphere, built among spectacular shady trees of ebony, acacia and sausage tree. It offers eight large safari style tents and a family unit equipped with tasteful furnishings and private en-suite bathrooms. The main lodge area is on raised decking encircling the trees and offers a dining and sitting area, a cocktail bar and a refreshing plunge pool.

Activities at Kanana include day and night game drives in open 4x4 safari vehicles, game viewing on mokoro excursions, guided walks, fishing, motor boating and sunset cruises. The waterways are lined with reeds and dotted with papyrus and tree islands in this picturesque and tranquil part of the delta. As water levels vary throughout the year so does the focus of activities. The camp managers will advise guests on the best options during their stay. A wide variety of game frequent the islands around Kanana Camp including impala, lechwe, leopard, lion and elephant and you may be lucky to see sitatunga whilst boating.

Birding all year round is exceptional with regular sightings of Pels Fishing Owl amongst many others. Kanana Camp is one of the few camps in the Delta to have access to a private heronry where many migratory water birds come to nest from July onwards. Birds you will encounter at the heronry include marabou,



yellow-bill and open-bill storks. The sight of thousands of nesting birds is mesmerising and an experience you will not forget.

On a two night or longer stay, guests can pre book the sleep out deck at an additional surcharge, affording a chance to spend a memorable night out under the superb African skies (weather permitting).

**Airstrip Transfer Time:** 30 minutes



## Day 7

### African Rock Hotel & Spa, Johannesburg



Johannesburg is one of Africa's largest and most vibrant cities. It is an economic powerhouse in Africa and the gateway to Southern Africa. This bustling city offers a wide range of activities, attractions and plenty to do in and around the city including nearby Pretoria. Downtown is a multi-cultural mixture of traditional medicine shops, Chinese restaurants, taxi ranks and ultra-modern skyscrapers. There are excellent museums, art galleries and organised tours of historical and political interest. The shopping is Southern Africa's best and the many restaurants cater for all tastes. Soweto, a township steeped in history and a significant part of the Greater Johannesburg metropolitan area, is a popular tourist destination.

### Day Itinerary

Following breakfast and a morning activity (flight time permitting) you will transfer by light aircraft to Maun Airport in time for your exiting international flight (Maun – Johannesburg not included in this package). A Safari Specialists representative will meet you on arrival at Maun Airport to assist with check in for your regional flight to Johannesburg.

After immigration formalities, you are met in the arrivals hall at Johannesburg Airport by a representative from African Rock Hotel, with a signboard, who will assist with your road transfer to the hotel. Here, you spend one night on a bed and breakfast basis, reconfirm your airport transfer time for the following morning.

### Overnight: African Rock Hotel & Spa

**Includes:** Dinner, Bed and Breakfast.

This boutique hotel is located 11 kilometres from the Johannesburg International Airport - O.R. Tambo, in the quiet suburb of Kempton Park away from the flight path of arriving and departing planes.

African Rock Hotel has 9 rooms that can accommodate 18 guests. A well established lush tropical garden, a swimming pool and large patio ensures relaxing outdoor living. The interior "look and feel" boasts a successful fusion of African, Western and Oriental design trends and offers a warm, welcoming and relaxing atmosphere. The Blue Hippo Restaurant at African Rock Hotel has a fusion cuisine, Western with an African touch & vice versa.

It has quick and easy high way access to Johannesburg, the Sandton area as well as Pretoria. The hotel has a shuttle service to the airport and other destinations, city and country tours booking office and wellness and beauty treatments.

**Airport Transfer Time:** 20 - 30 minutes



## Day 8-13

### Santorini Mozambique, Vilanculos



Vilanculos (or Vilankulo) is a coastal town in Mozambique, lying in the Vilanculos District of Inhambane Province. Vilankulo is named after historical local tribal chief Ganiala Vilankulo Mukoke, and some of the "bairros" (suburbs) are named after his sons. During colonial times the name was changed to Vilanculos since the Portuguese do not use the letter K much, and commonly use the 'ssh' sound of the S. At independence the name was changed back to Vilankulo - with a K and no S. Today the district is called Vilanculos and the town Vilankulo. It has been the recipient of considerable inward investment into its tourism infrastructure. It is the gateway to the famous Bazaruto archipelago where Dhows and engine-powered fishing boats travel between the town and the islands transporting goods and people. The town itself is only about 5kms long filled with all the amenities needed to make your visit comfortable, yet local. The airport is based on the outside of the town with flights arriving and departing on a daily basis. Vilankulo has an array of options when it comes to bars (barracas) and restaurants. If local is more your flavour, work your way from The Market in the center of town towards the main beaches of Vilankulo.

## Day Itinerary

Following breakfast, at a pre-arranged time, you are transferred back to Johannesburg Airport in time for check into the regional flight to Vilanculos Airport (flight NOT INCLUDED from Johannesburg - Vilanculos).

On arrival at Vilanculos Airport, you will be met by a representative from Santorini to transfer you down to by road out to the lodge. Here, you spend five nights on a fully inclusive basis in the Santa Carolina Suite.

The following activities are included :Kayaks & stand-up paddle boarding • Snorkelling equipment for boat excursions • Beach volleyball, cricket and badminton • A selection of children's activities including baking, pool & beach toys, Ocean and Beach activity booklets as well as board games. • Gym baskets with yoga mats, fit balls and light weights • Beach Picnics – Breakfast or Lunch.

Further activities are optional extras to pay direct.

## Overnight: Santorini Mozambique

**Includes:** accommodation, meals, local drinks, return Vilanculos airport transfers, laundry and specified activities

**Excludes:** spa treatments, premium drinks, park fees and additional activities

**Included activities:** unguided and non- motorized activities (snorkeling, paddle & sandboarding, leisure fishing & beach games)

**Excluded activities:** all motorized and guided activities.

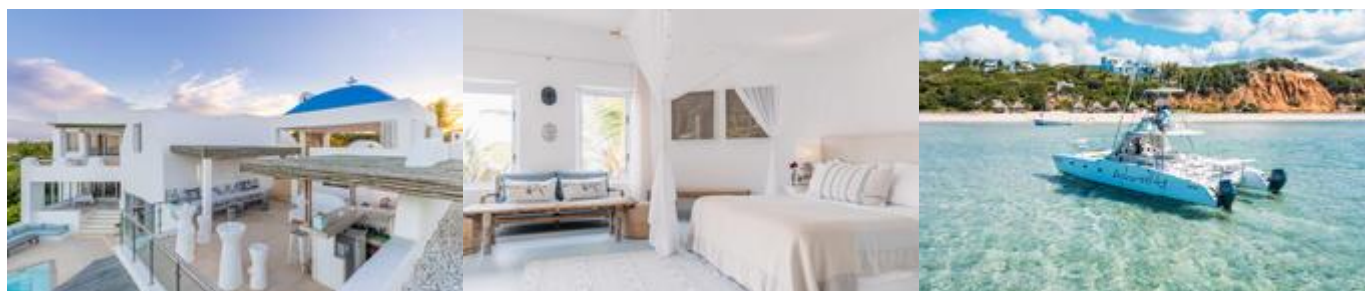
Villa Santorini sits on an elevated point north of Vilanculos, surrounded by dense coastal vegetation with its own stretch of beach overlooking the Bazaruto Archipelago. At each of Santorini's elegant villas, attentive staff are at hand to attend to all guests' requirements.

The Main Villa has a multifaceted living structure comprised of a lounge, library, outdoor cocktail bar, wine cellar, dining areas and pool courtyard, where guests can relax. The Main Villa has five spacious, airconditioned, en suite bedrooms that feature private patios and breath-taking sea views.

Santorini also offers villas on an exclusive use basis. The Chapel features a spacious lounge, bar, dining areas and private pool. Two airconditioned sea facing bedrooms with en suite bathrooms complete the villa. Villa Da Praia at Santorini is generously sized, with split level living spaces consisting of a lounge, dining area and private pool. Two bedrooms have ocean views from their private patios and one bedroom overlooks a scenic garden terrace. All bedrooms are en suite and airconditioned.

Spa treatments can be enjoyed at the Main Villa at additional cost. Additional activities available at additional cost include boat charters, scuba diving, bill fishing, horse riding, kite surfing, dhow trips, scenic helicopter flights and beach biking.

**Airport transfer:** 20 minutes from Vilanculos Airport



## Day 13

### End of Itinerary

---

#### Day Itinerary

Following breakfast, confirm your transfer back to Vilanculos Airport in time for your onward connecting flight arrangements.

---

#### Travel Information

**Please take note of our Booking Terms & Conditions. It will be understood that these have been read and accepted by you on receipt of confirmation of the booking.**

- For your safety and peace of mind, on confirmation of your booking, we strongly recommend that Travel Insurance is arranged to cover cancellation, curtailment, emergency evacuation, medical and repatriation expenses, damage/theft/loss of personal luggage, money and goods.
- Road and air transfers and activities are quoted on a seat basis (shared) unless otherwise requested or specified. Passengers may have various stops en-route to a destination. The transfer or charter company reserves the right to specify departure and arrival times. Private charters and airport assistance from arrival to departure can be requested at an additional cost.
- Passengers exceeding 100kg are kindly asked to notify us at the time of booking as a surcharge may be applicable on internal flights due to smaller aircraft having strict weight limits in compliance with industry safety regulations.
- The costs are subject to change at any time due to fluctuations in fuel costs, taxes, levies, government regulations, rate of exchange and factors that are imposed upon us by our suppliers that are beyond our control.
- Please advise us of the ages of children (under 18) travelling, together with their date of birth, at the time of booking as not all lodges accept children and there may be restrictions or conditions which can affect pricing.
- We recommend that optional activities be booked in advance at time of confirmation to guarantee availability e.g Dinner cruises in Victoria Falls
- Please allow a minimum 2-3 hours connection time in Johannesburg for international flights. It is important that you check that your flight tickets have been issued in your full names as per your passport. Ensure that your luggage is checked through to your final destination to avoid the need to collect and recheck it during transit, such as at OR Tambo International Airport
- We require full payment for international and domestic scheduled flights at the time of confirmation e.g Airlink JNB/MUB, Proflight LIV/LUN within Zambia. We are not able to guarantee any flights before receipt of payment as seats are often held for a limited period before ticketing is required so this is a time sensitive issue. Air tickets are considered non refundable unless otherwise specified. Please confirm the details with your consultant at the time of booking.

#### **Passports, Visas and Travel Documentation**

Your passport must have at least 6 months validity before the expiry date and 6 empty pages (not including the endorsement pages). The onus is upon the guests to ensure that passports and visas are valid for the countries visited. Please note that certain visas can take up to 3 months to be processed so please consider this when booking.

If you are travelling with children through Southern Africa, please be aware that you will be required to have certified copies of their unabridged birth certificates, and passports on hand. If you are not their legal

parents, or if only one of you is travelling – you will need to have consent in the form of an affidavit giving you permission to travel with the child.

### **Inter-camp transfers**

Due to the remote locations of the areas in Southern Africa - your itinerary may include road, boat, helicopter and air transfers in small aircraft.

On shared air transfers, all the flight times between lodges are arranged a few days before the flights take place to avoid endless schedule changes. The lodge or camp where you are staying will be advised of your departure time the day before travel and will ensure that you are at the airstrip on time. Although every effort will be made to ensure that guests are transferred together in one vehicle / aircraft, this cannot be guaranteed, especially with larger groups. The aircraft used for inter-camp transfers vary in size from 3-, 5-, 7- and 12-seater aircraft. We recommend that guests susceptible to motion sickness take appropriate precautions due to flying conditions.

### **Weight & Luggage Restrictions**

There are strict luggage restrictions in place on any itinerary, which includes light aircraft transfers for safety reasons. Luggage, including camera equipment and hand luggage, is restricted to 20 kg per person travelling on seat rates. Only soft bags will be accepted - no hard suitcases or bags with rigid frames can be transported, as they physically cannot fit into the aircraft.

The maximum dimensions of the soft bags that can be accommodated are as follows: 25cm/10 inches wide x 30cm/11 inches high and 62cm/24 inches long. Please keep in mind that the baggage compartments on the light aircraft are only 25cm high, so the pilots must have the ability to manipulate the bag into the compartment. Note that laundry can be done on a daily basis at most camps and lodges and they also offer amenities (shower gel/shampoo).

Should you arrive with excess baggage without prior warning, your baggage could be delayed, as we may have to fly the baggage into camp at a later stage at considerable extra cost to you. However, should you notify us in advance that your baggage will exceed the limit; we may be able to assist you with alternative arrangements e.g. storage or purchase of additional luggage allowance.

For bookings including flights within Zambia & Mozambique, please note luggage weight exceptions under destination information.

### **Lost Luggage**

Lost luggage on international flights is a common problem facing travellers today. We suggest that you pack a small bag with your essentials, including any life sustaining medication, which can be carried with you as hand luggage. If travelling as a couple or family we suggest that you split your clothing between bags so that if one bag gets lost, you will have basic items on hand to see you through the first couple of days while we try and recover your lost baggage.

Please note that whilst we try our utmost to locate and re-unite you with your bags, that there may be charges involved in getting your bags to remote areas, which would be for your cost. Please remember to report the lost luggage to the airline as soon as you make the discovery - the airline will issue you with a Baggage Claim Form, which you will need in order for us to trace the bag.

### **Health and Dietary**

Please note that you are travelling to a Malaria-risk area. Please consult your doctor for medical advice prior to travel.

Although usually safe to drink, we do not recommend that you drink the tap water. Filtered water is available at the camps and lodges.

The camps are remote, with limited power supply and access to resources, so it is very important to notify us in advance of any special dietary requirements, medical conditions and medical equipment you may need with you. Please carry critical medication in your hand luggage.

Yellow Fever Certificates - are only required if you have travelled to a Yellow Fever area as designated by the World Health Organisation. Please check with your Travel Clinic or doctor well in advance of your departure date.

### **General Travel Information**

- Safari Camps and lodges offer limited electricity usually generated by solar or generator in order to make provision for charging cameras and electronic devices.
- Please ensure that you do not pack any valuables, cameras, cash, laptops travel documents and medication in your checked in luggage – these should be kept on your person at all times.
- Please notify us immediately of any changes to flight arrival and departure details as this affects onward transfer arrangements.
- Please note that most camps & lodges in Botswana do not have double beds. Twin beds are pushed together to make up a double room.
- Although every effort is made to adhere to schedules the company reserves the right and in fact is obliged to occasionally change routes and camps on safaris as dictated by changing conditions or unforeseen circumstances.
- By confirmation of the booking, you acknowledge that you have been made aware and accept that the tour carries inherent risks, and that you voluntarily assume all risks which are associated with the tour. You will be required to sign indemnities at the various camps, lodges and service providers, and abide by their operators' code of conduct in order to ensure your safety.
- If you have any cause for complaint while travelling, you should immediately bring it to the attention of the camp manager and / or our Maun office that will attempt to resolve the situation immediately.
- Do not remove any animal artefacts, flora or fauna from any of the areas you visit, as there are strict international regulations on the export of such items.